

# NEXT LEVEL GREATS



 **Thursday, February 13th, 2025 -  
Monday, February 17th, 2025**

**Visit us on the web :**

[www.TheSandbarHotel.com](http://www.TheSandbarHotel.com)



**843-448-1461 ext 1410**

## DISCOUNTED GROUP ROOM RATES

### **KING STANDARD NORTH BUILDING**



King bed, compact fridge,  
microwave. Elevator Access

Thu ; \$50 ++ = \$76.50  
Fri & Sat: \$60 ++ = \$87.80  
Sun: \$50 ++ = \$76.50

### **QUEEN STANDARD SOUTH BUILDING - STAIR ACCESS ONLY- 3 LEVELS**



Two queen beds, compact fridge,  
microwave, private balcony  
overlooking pool.

Thu ; \$70 ++ = \$99.10  
Fri & Sat: \$80 ++ = \$110.40  
Sun: \$70 ++ = \$99.10

### **QUEEN EFFICIENCY SOUTH BUILDING - STAIR ACCESS ONLY - 3 LEVELS**



Two queen beds, full kitchen w  
/ stove, private balcony  
overlooking pool.

Thu \$75 ++ = \$104.75  
Fri & Sat: \$85 ++ = \$116.05  
Sun: \$75 ++ = \$104.75

### **QUEEN STANDARD SOUTH BUILDING -GROUND LEVEL**



Two queen beds, compact fridge,  
microwave, private patio facing  
pool.

Thu ; \$75++ = \$104.75  
Fri & Sat: \$85 ++ = \$116.05  
Sun: \$75 ++ = \$104.75



# THE SANDBAR HOTEL, TRADEMARK BY WYNDHAM

1804 S. Ocean Blvd, Myrtle Beach SC 29577

**DISCOUNTED ROOM RATES  
PRICES PER NIGHT  
RATES BASED ON QUAD OCCUPANCY**

## **QUEEN EFFICIENCY SOUTH BUILDING - GROUND LEVEL**



Two queen beds, full kitchen w / stove, private balcony overlooking pool.

Thu \$90++ = \$121.70  
Fri & Sat: \$100 ++ = \$133.00  
Sun: \$90 ++ = \$121.70

## **TWO QUEEN SUITE North Building**



Two queen beds in separate rooms , full kitchen w/stove, microwave, coffee maker. Elevator Access Sleeps 4

Thu: \$95 ++ = \$127.35  
Fri & Sat: :\$105++ = \$138.65  
Sat: \$95++ = \$127.35

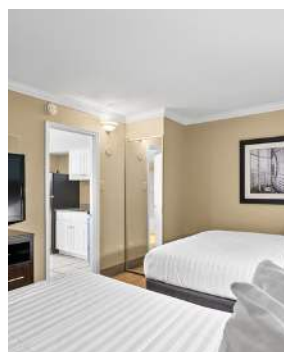
## **OCEAN VIEW QUEEN EFFICIENCY SOUTH BUILDING -**



Two queen beds, compact fridge microwave, private balcony with view of the ocean. , Stair Access Only (3 Floors)

Thu \$110 ++ = \$144.30  
Fri & Sat: ++ = \$120 ++ = \$155.60  
Sun: \$110++ = \$144.30

## **TRIPLE QUEEN SUITE CENTER BUILDING**



Three queen beds (2 beds in separate bdrm) full kitchen w/Stove. Sleeps 6. Elevator Access

Thu \$130 ++ = \$166.90  
Fri & Sat \$140 ++ = \$178.20  
Sun: \$130 ++ = \$166.90

## **COMPLIMENTARY MEETING ROOM**



Thursday, February 13th 2025 -  
Monday, February 17th, 2025

Visit us on the web :

[www.TheSandbarHotel.com](http://www.TheSandbarHotel.com)



843-448-1461 ext 1410



# THE SANDBAR HOTEL, TRADEMARK BY WYNDHAM

1804 S. Ocean Blvd, Myrtle Beach SC 29577

## NEXT LEVEL GREATS

4 MILES FROM ASHLEY BOOTH STADIUM



 Thursday, February 13th, 2025  
Monday, February 17th, 2025

Visit us on the web :

[www.TheSandbarHotel.com](http://www.TheSandbarHotel.com)



843-448-1461 ext 1410

**DISCOUNTED ROOM RATES  
PRICES PER NIGHT**

### OCEANFRONT KING EFFICIENCY BEACHFRONT BUILDING



King bed, full kitchen w/stove, private oceanfront balcony. Sleeps 2

Thu \$120 ++ = \$155.60  
Fri & Sat \$130 ++ = \$166.90  
Sun: \$120 ++ = \$155.60

### OCEANFRONT QUEEN EFFICIENCY BEACHFRONT BUILDING



Two queen beds, full kitchen w/stove, private oceanfront balcony  
Sleeps 4

Thu \$140 ++ = \$178.20  
Fri & Sat \$150 ++ = \$189.50  
Sun: \$140 ++ = \$178.20

### OCEANFRONT PREMIER SUITE BEACHFRONT BUILDING



Two queen beds in separate rooms. One king bed, full kitchen w/stove. Private oceanfront balcony. -Sleeps 6

Thu \$180 ++ = \$223.40  
Fri & Sat \$190 ++ = \$254.70  
Sun: \$180 ++ = \$223.40

### OCEANFRONT TWO QUEEN SUITE BEACHFRONT BUILDING



Two queen beds in separate rooms, full kitchen w/stove. Private oceanfront patio with entry to oceanfront deck. -Sleeps 4

Thu \$150 ++ = \$189.50  
Fri & Sat \$160 ++ = \$200.80  
Sun: \$150 ++ = \$189.50